

CANOE TRAIL FRIENDS OF MANDURAH AND PINJARRA INC.

Scope of Canoe Guides



Compiled by
Heritage Sites
Mandurah Community Museum

Sponsored by



Canoe Trail Friends of Mandurah & Pinjarra Inc. is a not-for-profit organization dedicated to the preservation and promotion of the Peel Inlet and Harvey Estuary. The organization's primary focus is on environmental protection, heritage conservation, and community education. Through its various projects and initiatives, the group aims to ensure the long-term sustainability of these important natural and cultural resources for future generations.

This leaflet has been produced to show the scope of the canoe guides compiled by the Canoe Trail Friends of Mandurah and Pinjarra Inc. (a 'paddlers alliance') and valued heritage sites on the Peel Inlet and the Harvey Estuary as identified by the Mandurah Community Museum.

Neither this leaflet nor its map is a canoeing or a boating guide.

Environmental and community projects currently being undertaken by the Friends include:

- establishment of a number of sanctuary zones for water and shore birds in the Peel Inlet and Harvey Estuary to help protect threatened migratory and residential wader birds;
- tree plantings and clean-ups along our rivers and waterways;
- incorporation of canoe trails in the proposed Peel Regional Park;
- development of canoe launch points to provide better access to our rivers and waterways;
- preparation of submissions to local and state governments raising concerns about environmental impacts on our waterways; and
- event coordinators of the annual Peel Region Canoe Week.

The Friends are members of:

- Peel Boating Community Group;
- Peel Trails Group; and
- Peel-Yalgup System Ramsar Project Technical Advisory Group.

Membership is open to any person over the age of 18 years. The annual membership fee is \$5. **Please note:** this is not a paddling club.

Inquiries: see details in adjacent column.

CANOE TRAIL FRIENDS OF MANDURAH AND PINJARRA INC.

Free publications

Waterproof Canoe Guides

- Murray River No. 1 The Darter Trail
No. 2 The Swamphen Trail

Serpentine River

- No. 3 The Heron Trail &
No. 3A The Spoonbill Trail
No. 4 The Mountain Duck Trail

Harvey River

- No. 5 The Great Egret Trail

Peel Inlet

- No. 6 The Osprey Trail

- Peel Inlet and Harvey Estuary No. 7 The Pelican Trail

Canoe Guide Companions

- A Natural History
B Who are the Canoe Trail Friends?
C Human History

For free copies of these limited edition publications, send a self-addressed envelope, with stamps to the value of \$1.65, to: PO Box 3188, Mandurah East, WA 6210. For further information, visit:
<http://canoeatrailfriendsmandurahandpinjarra.blogspot.com>

A: Smokey Joe's Camp



Alf Miller came to Mandurah in the late 1940s. A bachelor all his life, he eked out a living fishing from this camp. He had a shanty and finally a small boat which he also used to prawn with. He rented the area of his home from the Sutton family for a peppercorn rental and when they were selling it they ensured he could remain there for however long he wished. Eventually when this part of Sutton's Farm was sold, for the second time, the developers persuaded him to leave this area in exchange for a small unit in Mandurah.

B: Chimneys/Sticks



The channel from the estuary out to the ocean was a tortuous channel called "The Sticks" after the rough bush branches which were used to mark the channel. The stick closest to the estuary was the biggest stick which the last fisherman out at night used to hang a hurricane lamp from to provide a bearing point to get back into the channel. Eventually, the Fisheries

Department replaced the stick with a beacon. Ross Kirkpatrick tells..."In my early days here, back in 1948, '49, '50, when I used to go up to the estuary a lot at night, because we'd sometimes go up by boat and prawn at the Murray and come back, the guiding star in those days was the lights of Perth. The only lights on the horizon to the north were the lights of Perth. The lights of Perth wouldn't supersede the lights of Mandurah now, but that was the landmark, and once you got on that line, you then would pick up the beacon light that the Fisheries Department put in there."

The other landmark in the vicinity was "The Chimneys", named after the limestone chimneys (circa 1900) that were part of the smokehouse built by Henry Halliday. The chimneys are gone today but the name remains.

C: Herron Point/Island Crossing

Named after the Herron family who farmed on either side of the estuary. They had a property near Lake Clifton with a house known as Greenwood Cottage. A sandbar connected Herron and Island Points and the Herron family would cross over to Island Point to get to their summer house. They moved cattle from Island Point to Herron Point and beyond every winter to prevent 'coasties disease'. Cattle left on coastal pasture developed weakness during winter time which was later attributed to a trace element deficiency. Farmers of the early 1900s just knew that escapee cattle which headed for the hills did better than the ones kept on the coast.

D: Birchmont



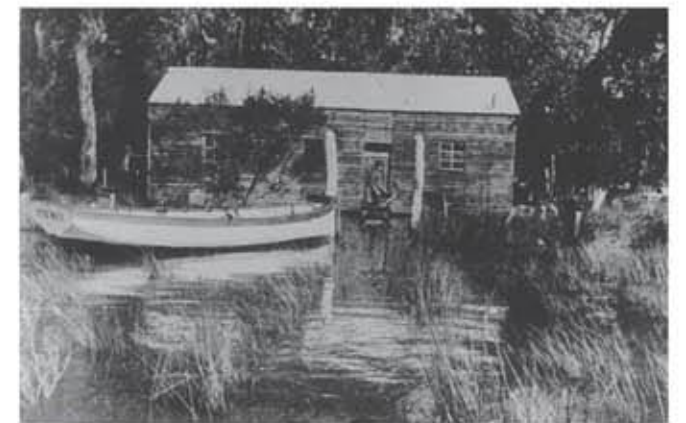
Home of the pioneering Birch family in the 1860s, it was Mrs Birch who led to the discovery of the Island Point crossing. Once, she reported a large gathering of Aboriginals around

Birchmont, and when mounted police investigated, the group had "magically" reappeared on the other side of the estuary. Crossing at Island Point was the only way they could have escaped.

E: Allendale

This 1915 residence was constructed over four years from limestone blown up on site by a contractor from Kalamunda, then trimmed and shaped with an axe by the Dawe family.

F: Pleasant Grove

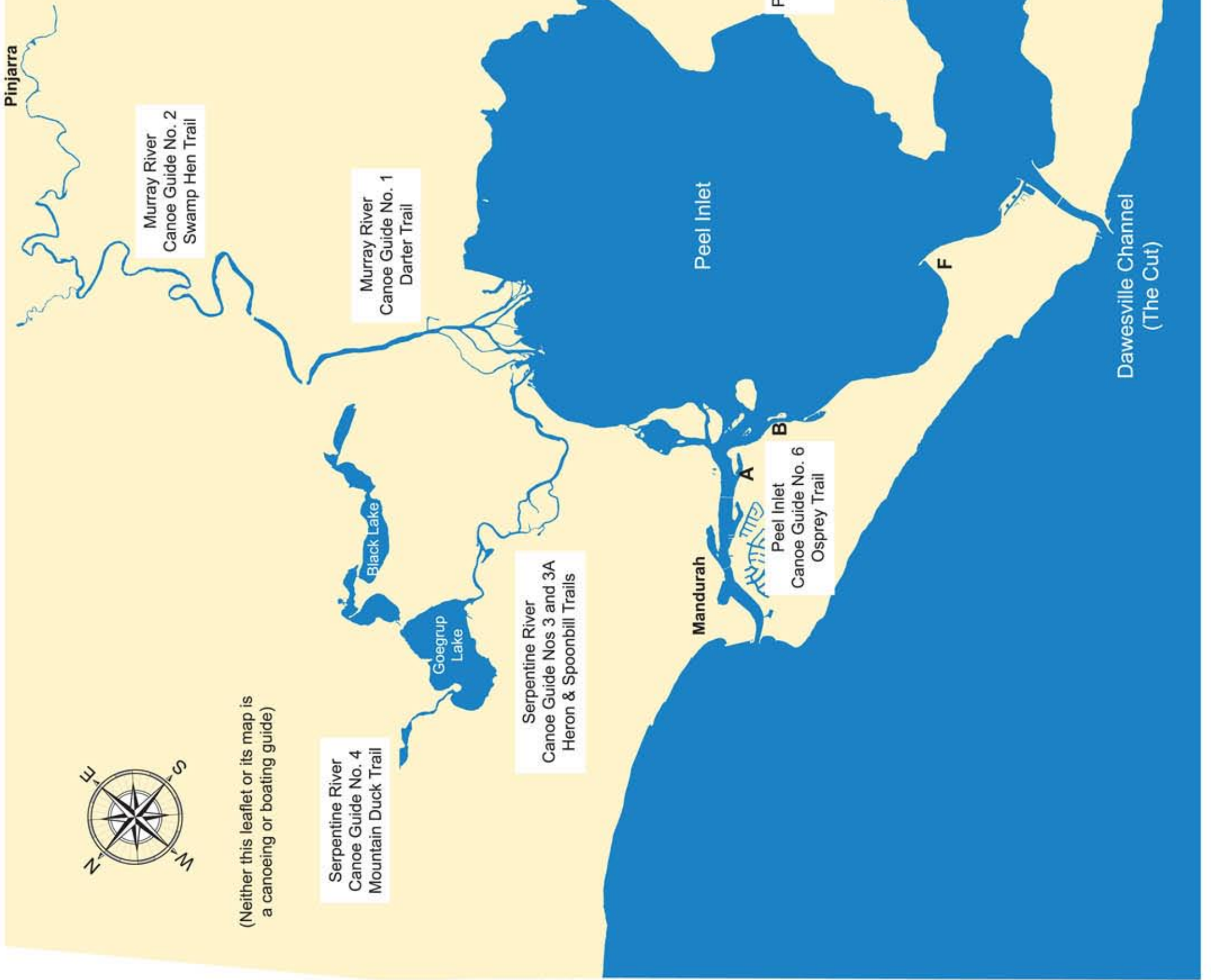


Louis Dawe settled in Mandurah, becoming a tinsmith for Tuckey's Peel Inlet Preserving Works in 1896. Soon after, he started up his own factory at Pleasant Grove. He smoked and canned fish, and sold honey. His fish became world famous, winning prizes in Paris and London. In 1918 Louis shifted to the Dawesville area where he built a wooden cannery. The cannery stopped production in 1939 and was destroyed in 1978 by Cyclone Alby.





(Neither this leaflet or its map is a canoeing or boating guide)



Murray River
Canoe Guide No. 2
Swamp Hen Trail

Murray River
Canoe Guide No. 1
Darter Trail

Serpentine River
Canoe Guide No. 4
Mountain Duck Trail

Serpentine River
Canoe Guide Nos 3 and 3A
Heron & Spoonbill Trails

Peel Inlet
Canoe Guide No. 6
Osprey Trail

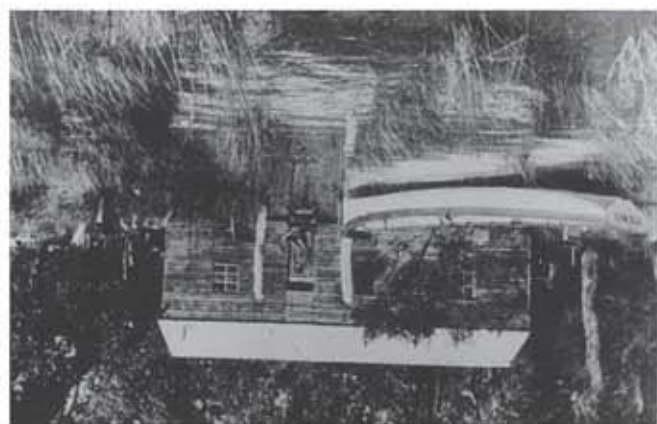
Harvey River
Canoe Guide No. 5
Mountain Duck Trail

Peel Inlet & Harvey Estuary
Canoe Guide No. 7
Pelican Trail

Dawesville Channel
(The Cut)



Louis Dawe settled in Mandurah, becoming a tinsmith for Tuckey's Peel Inlet Preserving Works in 1896. Soon after, he started up his own factory at Pleasant Grove. He smoked and canned fish, and sold honey. His fish became world famous, winning prizes in Paris and London. In 1918 Louis shifted to the Dawesville area where he built a wooden cannery. The cannery stopped production in 1939 and was destroyed in 1978 by Cyclone Alby.



F: Pleasant Grove

This 1915 residence was constructed over four years from limestone blown up on site by a contractor from Kalamunda, then trimmed and shaped with an axe by the Dawe family.

E: Allendale

Crossing at Island Point was the only way they could have escaped. Birchmont, and when mounted police investigated, the group had "magically" reappeared on the other side of the estuary.

Home of the pioneering Birch family in the 1860s, it was Mrs Birch who led to the discovery of the Island Point crossing. Once, she reported a large gathering of Aborigines around



D: Birchmont

Named after the Heron family who farmed on either side of the estuary. They had a property near Lake Clifton with a house known as Greenwood Cottage. A sandbar connected Heron and Island Points and the Heron family would cross over to Island Point to get to their summer house. They moved cattle from Island Point to Heron Point and beyond every winter to prevent 'coasties disease'. Cattle left on coastal pasture developed weakness during winter time which was later attributed to a trace element deficiency. Farmers of the early 1900s just knew that escapee cattle which headed for the hills did better than the ones kept on the coast.

C: Heron Point/Island Crossing

The other landmark in the vicinity was "The Chimneys", named after the limestone chimneys (circa 1900) that were part of the smokehouse built by Henry Halliday. The chimneys are gone today but the name remains.

Department replaced the stick with a beacon. Ross Kirkpatrick tells... "In my early days here, back in 1948, '49, '50, when I used to go up to the estuary a lot at night, because we'd sometimes go up by boat and prawn at the Murray and come back, the guiding star in those days was the lights of Perth. The only lights on the horizon to the north were the lights of Perth. The lights of Perth wouldn't supersede the lights of Mandurah now, but that was the landmark, and once you got on that line, you then would pick up the beacon light that the Fisheries Department put in there."

The channel from the estuary out to the ocean was a torturous channel called "The Sticks" after the rough bush branches which were used to mark the channel. The stick closest to the estuary was the biggest stick which the last fisherman out at night used to hang a hurricane lamp from to provide a bearing point to get back into the channel. Eventually, the Fisheries



B: Chimneys/Sticks

Aff Miller came to Mandurah in the late 1940s. A bachelor all his life, he eked out a living fishing from this camp. He had a shanty and finally a small boat which he also used to prawn with. He rented the area of his home from the Sutton family for a peppercorn rental and when they were selling it they ensured he could remain there for however long he wished. Eventually when this part of Sutton's Farm was sold, for the second time, the developers persuaded him to leave this area in exchange for a small unit in Mandurah.



A: Smokey Joe's Camp

CANOE TRAIL FRIENDS OF MANDURAH AND PINJARRA INC.

Scope of Canoe Guides

Compiled by

Canoe Trail Friends of Mandurah & Pinjarra Inc.



Heritage Sites

Compiled by Mandurah Community Museum

Sponsored by



This leaflet has been produced to show the scope of the canoe guides compiled by the Canoe Trail Friends of Mandurah and Pinjarra Inc. (a 'paddlers alliance') and valued heritage sites on the Peel Inlet and the Harvey Estuary as identified by the Mandurah Community Museum.

Neither this leaflet nor its map is a canoeing or a boating guide.

Environmental and community projects currently being undertaken by the Friends include:

- establishment of a number of sanctuary zones for water and shore birds in the Peel Inlet and Harvey Estuary to help protect threatened migratory and residential wader birds;
- tree plantings and clean-ups along our rivers and waterways;
- incorporation of canoe trails in the proposed Peel Regional Park;
- development of canoe launch points to provide better access to our rivers and waterways;
- preparation of submissions to local and state governments raising concerns about environmental impacts on our waterways; and
- event coordinators of the annual Peel Region Canoe Week.

The Friends are members of:

- Peel Boating Community Group;
- Peel Trails Group; and
- Peel-Yalgorup System Ramsar Project Technical Advisory Group.

Membership is open to any person over the age of 18 years. The annual membership fee is \$5. **Please note:** this is not a paddling club.

Inquiries: see details in adjacent column.

CANOE TRAIL FRIENDS OF MANDURAH AND PINJARRA INC.

Free publications

Waterproof Canoe Guides

Murray River

- No. 1 The Darter Trail
- No. 2 The Swamphen Trail

Serpentine River

- No. 3 The Heron Trail &
- No. 3A The Spoonbill Trail
- No. 4 The Mountain Duck Trail

Harvey River

- No. 5 The Great Egret Trail

Peel Inlet

- No. 6 The Osprey Trail

Peel Inlet and Harvey Estuary

- No. 7 The Pelican Trail

Canoe Guide Companions

- A Natural History
- B Who are the Canoe Trail Friends?
- C Human History

For free copies of these limited edition publications, send a self-addressed envelope, with stamps to the value of \$1.65, to: PO Box 3188, Mandurah East, WA 6210. For further information, visit: <http://canoetrailfriendsmandurahandpinjarra.blogspot.com>